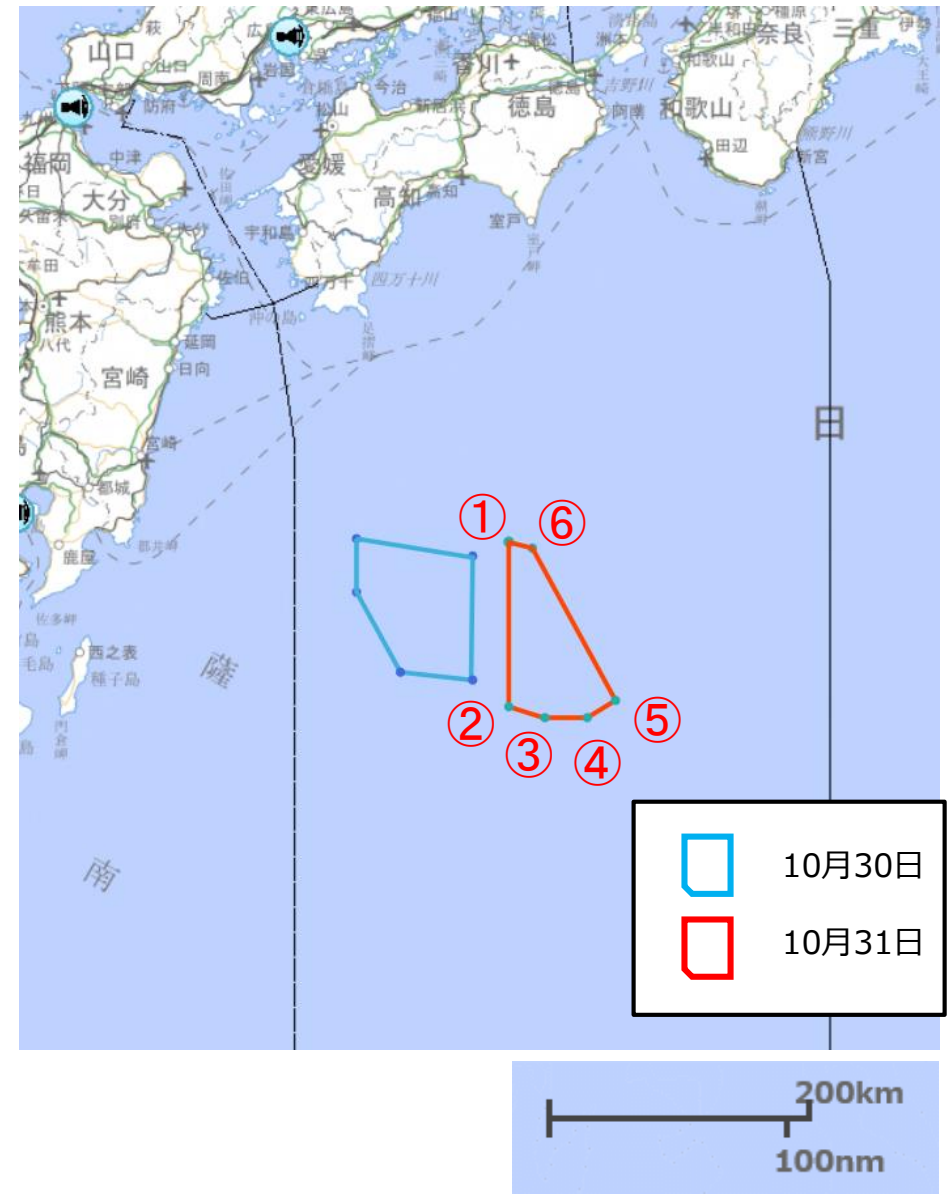
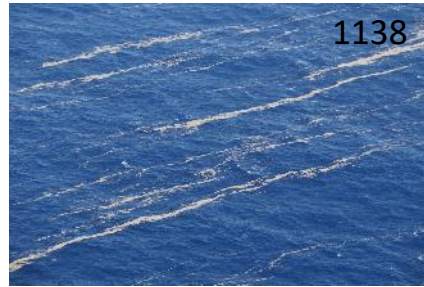


当庁航空機が確認した軽石の漂流状況(イメージ図)





31-24.43N 132-56.51E



31-24.43N 133-03.83E



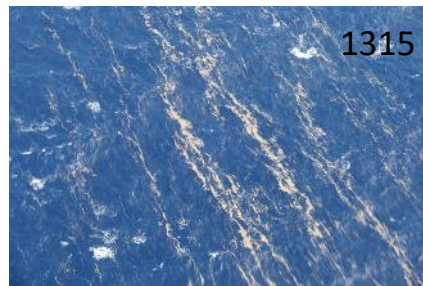
31-04.88N 132-56.36E



30-36.14N 133-14.55E



30-51.98N 133-18.05E



30-42.09N 133-30.01E

④ 30-33.46N 133-44.70E

⑤ 31-17.87N 133-45.00E

当庁航空機が確認した軽石の漂流状況(イメージ図)

